



Building Envelope Consultants and Scientists®

Your Career Path Starts Here

BECS Careers

Building Envelope Consultants and Scientists, the name says it all. We are experienced in every aspect of building enclosures, design, and performance testing. We strive to be the leading national engineering and waterproofing consultant for every facet of the building envelope, but that takes skills.

BECS is looking for talented consultants to join our growing company. Are you a good fit?

With openings throughout our East Coast operation centers, we are seeking project managers of varying seniority, experience, and skills. We have many roles to fill with professionals who have the “can-do” attitude and thrive in a fast-paced learning environment.

BECS strives to deliver the best possible service to our clients and to do that, we look to our experienced BECS Team. The staff of BECS is the backbone and the heart of our company. We value work/life balance, professional and personal career development and growth, and the occasional crab feast. We care about the whole package and not just the 9-5.

We hire attitude and train skills.



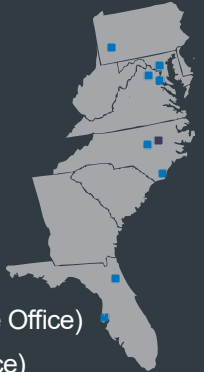
Engineered Solutions for Building Envelopes

BECS specializes in the development of structural and architectural maintenance, repair, and stabilization programs for new, existing, and historic structures. Our specific core of consulting expertise is geared toward serving:

- Office and Commercial Properties
- Higher Education Campuses
- Healthcare Facilities
- New Construction
- Multifamily Residential
- Historic Structures

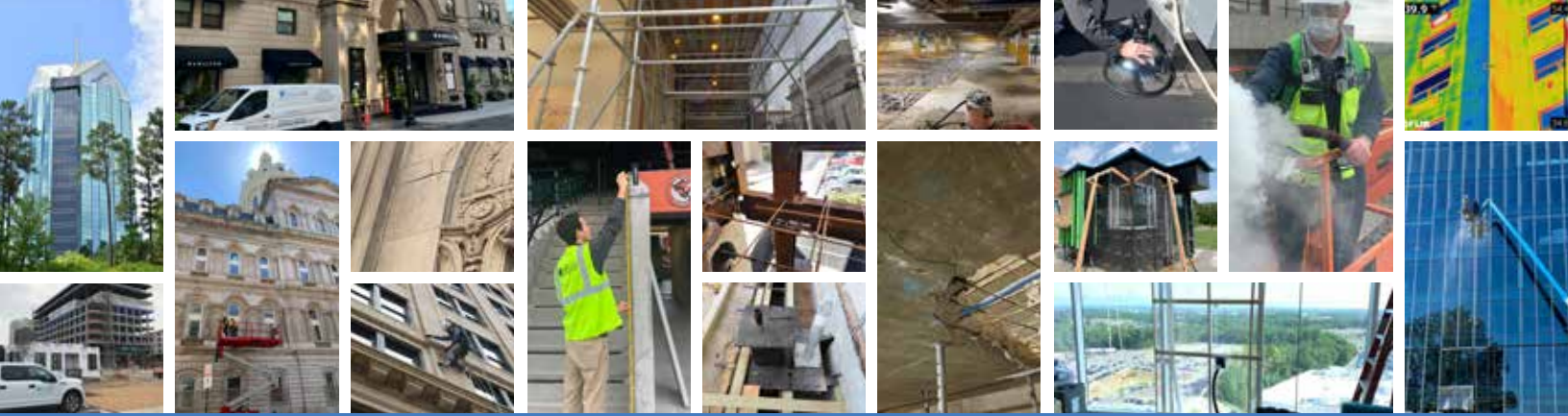
Our Locations

- Pittsburgh, PA
- Baltimore, MD
- Washington, DC
- Chantilly, VA
- Raleigh, NC
- Jacksonville, FL
- BECS Labs, Bunn, NC
- Wilmington, NC (Satellite Office)
- Tampa, FL (Satellite Office)



BECS identified that to provide the best solutions to our clients, we need to ensure the expertise of performance testing be at our client’s fingertips, so we developed BECS Labs. BECS Labs provides field and laboratory testing capabilities to fully support our building envelope consultants. BECS Labs brings the experience and foremost experts in the industry to the science of the building envelope and its performance.





BECS Benefits

Pay: Our total compensation philosophy is to pay employees competitively, provide bonus incentives, and to vary our rewards based on individual experience, talent, engagement, and company performance.

Paid Time Off: Personal Leave, Sick Leave, and a flexible approach to providing Holiday Leave so our BECS members can enjoy and observe the events that matter most in their lives.

Benefits: We provide some of the most competitive benefits in the industry. We are proud to provide each BECS Team member fully sponsored medical, dental, and vision coverage without a waiting period. We also offer options for Short Term, Critical Care, and Accident coverage plus Life Insurance.

- Health club, mobile phone, and mileage reimbursement
- High-end equipment, IT and 24/7 software support, remote and cloud-based access
- Company-sponsored Continuing Education training and seminar programs
- Certified skills and safety training courses and support throughout the year on-site and in the field training
- We offer Profit Sharing and a 401(k) Retirement Plan with matching contributions up to 4% within the first year of employment.
- Relocation assistance for well qualified candidates

Professional Development: Professional advancement and personal growth are important to everyone at BECS. We strive to support employees to continuously update their skills so they are more satisfied with their work, motivated to continue learning as the world evolves and the markets change, so all can be a part of contributing to the collective success of BECS.

Work Environment and Community: The quality of life with the right balance of work and personal time to meet life's demands and enjoy life, is important to all of us. We provide a hands-on working environment with flexibility to work remotely when needed, and opportunities for project work at different operation centers with members of the BECS Team.

Façade Access Support Technicians

No Access? No Problem!

Our Façade Access Support Technicians (FAST) Team has the training, talent, and equipment to quickly and safely access hard-to-reach areas without the excessive added cost and inconvenience of swing stages, scaffolding or high-reaches.

The FAST Team is seeking individuals who love heights and have the skill, stamina, and determination to face challenging projects using expertise and follow-through to deliver results to clients.

Do you have what it takes?



BECS is an equal opportunity employer. Qualified applicants will receive consideration for employment without regard to race, color, religion, sex, sexual orientation, gender identity, national origin, disability, or protected veteran status.